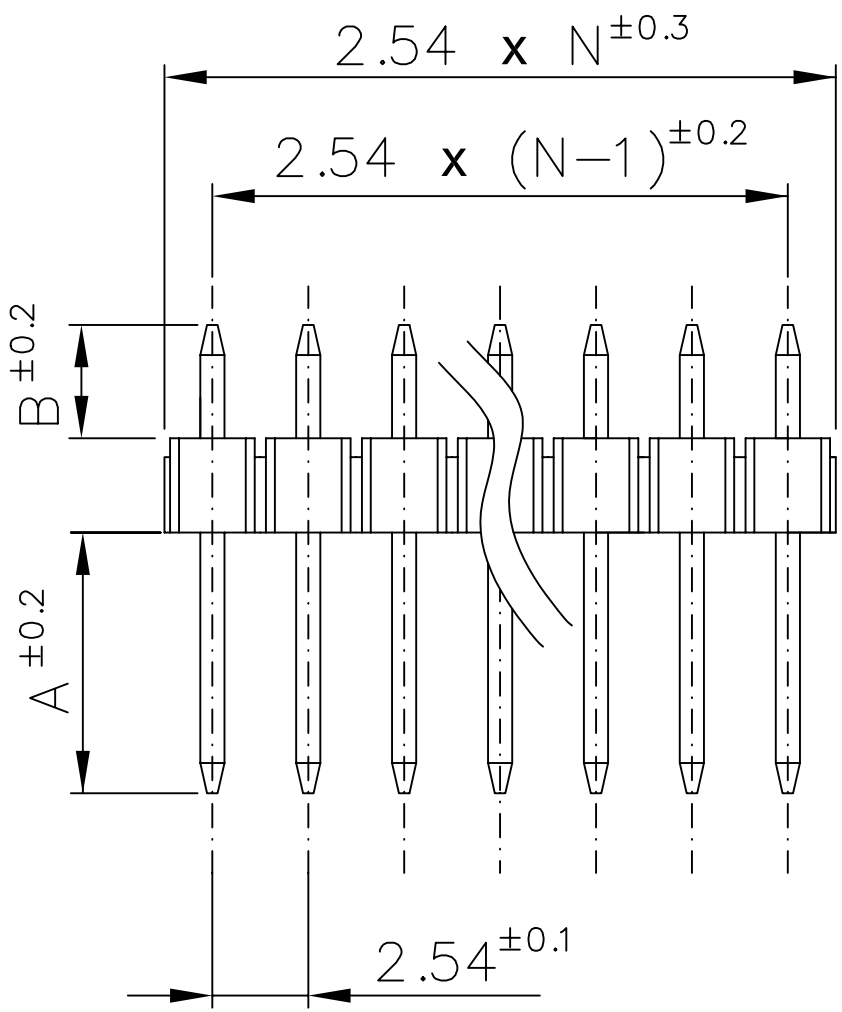
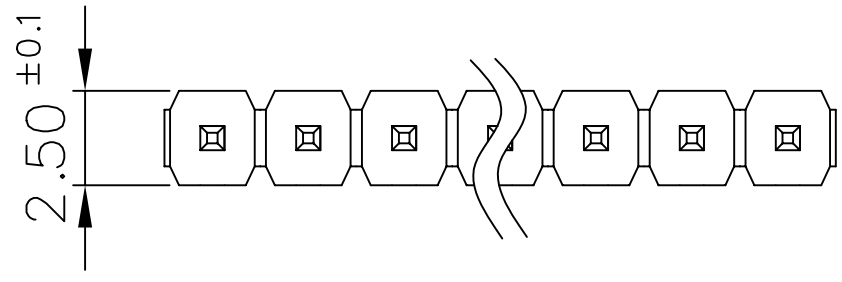


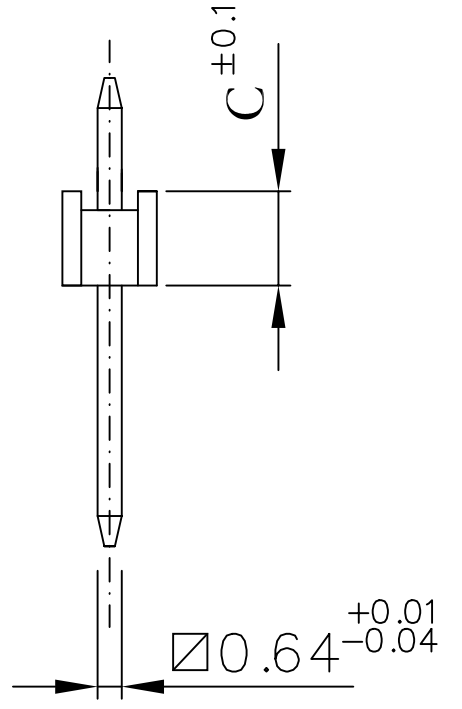
# CM-254-D-1x (XX) -1- (YY) - A/B/C

(XX) = N = number of contacts between 02 and 50

Put the desired dimensions for A, B and C in mm unit



- Plating:**
- (Y) = FG = gold flash
  - (Y) = G1 = gold 0.12µm
  - (Y) = G2 = gold 0.25µm
  - (Y) = G3 = gold 0.50µm
  - (Y) = G4 = gold 0.75µm
  - (Y) = TF = pure tin flash
  - (Y) = T1 = pure tin 5µm
  - (Y) = FS = selective gold flash
  - (Y) = S1 = selective gold 0.12µm
  - (Y) = S2 = selective gold 0.25µm
  - (Y) = S3 = selective gold 0.50µm
  - (Y) = S4 = selective gold 0.75µm



QUESTO DISEGNO È DI PROPRIETÀ DELLA DITTA FIORTECH E NON PUO' ESSERE USATO, E/O CEDUTO A TERZI SENZA IL PERMESSO SCRITTO DELLA FIORTECH  
 THIS DRAWING IS THE PROPERTY OF FIORTECH FACTORY AND IT CAN NOT BE USED, REPRODUCED AND OR LOANED TO THIRD PARTIES WITHOUT THE WRITTEN PERMISSION OF FIORTECH

	<b>ELECTRICAL PROPERTIES</b>	<b>MECHANICAL PROPERTIES</b>	<b>INSULATOR HEIGHT (C)</b>
	Current rate: 3 Ampère Insulation resistance: 5000MΩ min. Contact resistance: 10mΩ max. Dielectric Voltage: 500V AC for 1 minute	Operating temperature: -40°C + +105°C Peak temperature: 160° for 5+10 sec PCB recommended holes: ∅1.02mm	1.5mm ; 1.7mm ; 2.5mm are available. To be specified separately

INDEX	DATE	MODIFICATION OCCURRED		VISA Scale
TOLERANCES FOR FREE DIMENSIONS				Material: Pin: copper alloy Insulator: Nylon 6T (UL94V0)
ANGULAR VALUES	FROM 0.5 TO 3.0	FROM >3.0 TO 6.0	FROM >6.0 TO 10.0	
±2°	±0.125	±0.150	±0.180	16-02-06
	±0.215	±0.260	±0.310	Designer
	±0.370	±0.435	±0.500	Chiappini R.
	±0.575	±0.650		

Part number: CM-254-D-1x (XX) -1- (YY) -A/B/C

Drawing number: \_\_\_\_\_

Index: \_\_\_\_\_

File: \_\_\_\_\_

Description: \_\_\_\_\_

**Straight male connector pitch 2.54mm**

