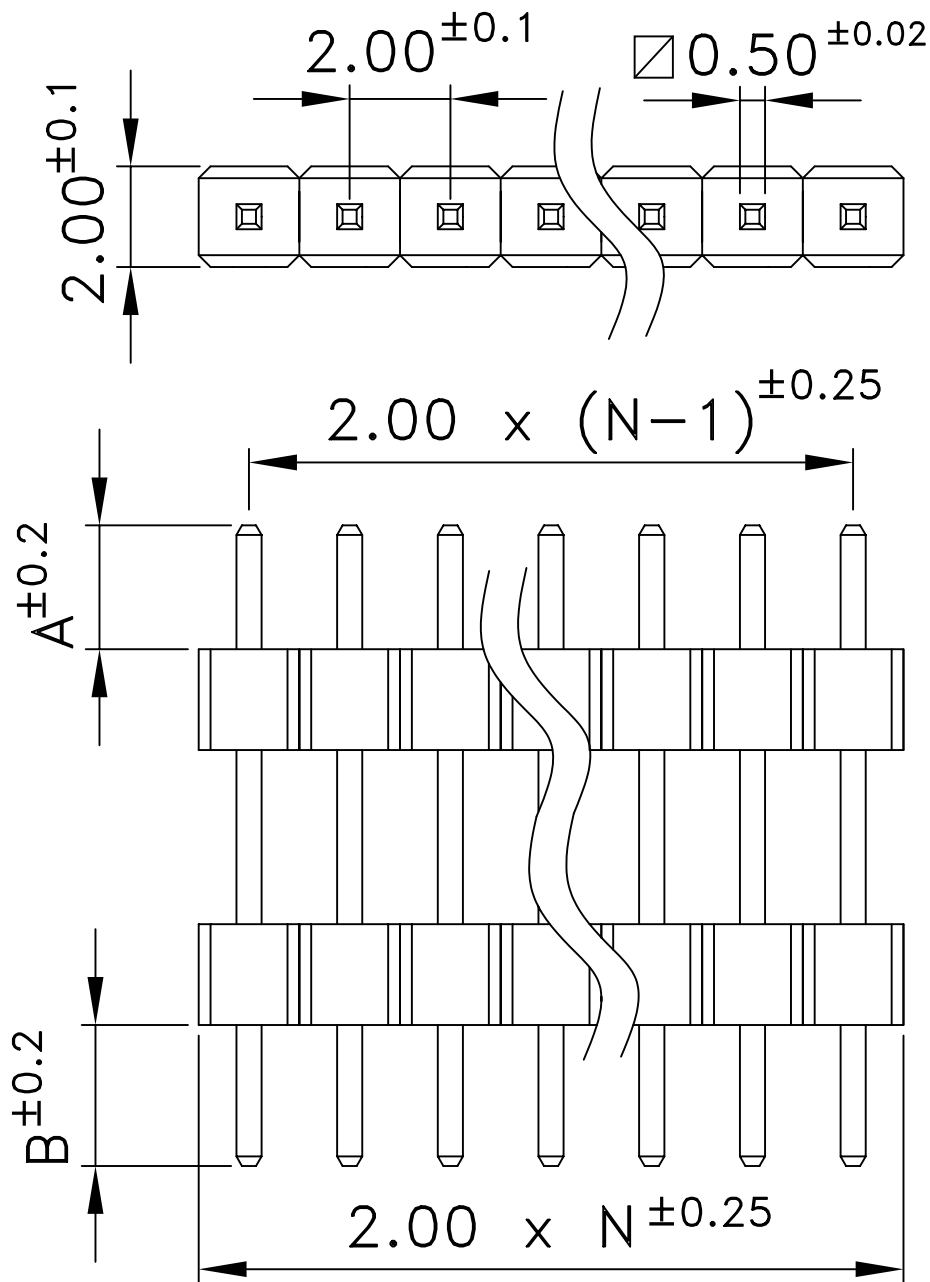


QUESTO DISEGNO È DI PROPRIETÀ DELLA DITTA FIORTECH E NON PUÒ ESSERE USATO, E/O CEDUTO A TERZI SENZA IL PERMESSO SCRITTO DELLA FIORTECH
 THIS DRAWING IS THE PROPERTY OF FIORTECH FACTORY AND IT CAN NOT BE USED, REPRODUCED AND OR LOANED TO THIRD PARTIES WITHOUT THE WRITTEN PERMISSION OF FIORTECH

CM-200-D-1x (XX) -2- (YY) - A/B/C/D

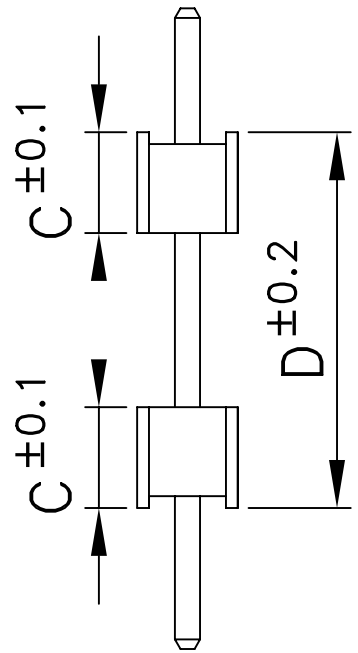
(XX) = N = number of contacts between 02 and 50

Put the desired dimensions for A, B, C and D in mm unit



Plating:

- (YY) = FG = gold flash (standard)
- (YY) = G1 = gold 0.12µm
- (YY) = G2 = gold 0.25µm
- (YY) = G3 = gold 0.50µm
- (YY) = G4 = gold 0.75µm
- (YY) = TF = pure tin flash
- (YY) = T1 = pure tin 5µm
- (YY) = FS = selective gold flash
- (YY) = S1 = selective gold 0.12µm
- (YY) = S2 = selective gold 0.25µm
- (YY) = S3 = selective gold 0.50µm
- (YY) = S4 = selective gold 0.75µm



	ELECTRICAL PROPERTIES		MECHANICAL PROPERTIES		INSULATOR HEIGHT (C)								
	Current rate: 1 Ampère Insulation resistance: 5000MΩ min. Contact resistance: 20mΩ max. Dielectric Voltage: 500V AC for 1 minute		Operating temperature: -40°C + +105°C Peak temperature: 160° for 5+10 sec PCB recommended holes: ø0.90mm		1.5mm ; 2.0mm are available.								
INDEX	DATE	MODIFICATION OCCURRED			VISA Scale								
TOLERANCES FOR FREE DIMENSIONS FROM 0.5 TO 3.0 FROM >3.0 TO 6.0 FROM >6.0 TO 10.0 FROM >10.0 TO 18.0 FROM >18.0 TO 30.0 FROM >30.0 TO 50.0 FROM >50.0 TO 80.0 FROM >80.0 TO 120.0 FROM >120.0 TO 180.0 FROM >180.0 TO 250.0 FROM >250.0 TO 315.0					Material: Pin: copper alloy Insulator: Nylon 6T (UL94V0)								
ANGULAR VALUES ±2°	±0.125	±0.150	±0.180	±0.215	±0.260	±0.310	±0.370	±0.435	±0.500	±0.575	±0.650	Plating: See table Notes: ---	Date of creation: 16-02-06 Designer: Chiappini R.

Part number: CM-200-D-1x (XX) -2- (YY) -A/B/C/D

Drawing number: _____

Index: _____

File: _____

Description: _____

Double insulator, single row
straight male connector pitch 2.54mm

